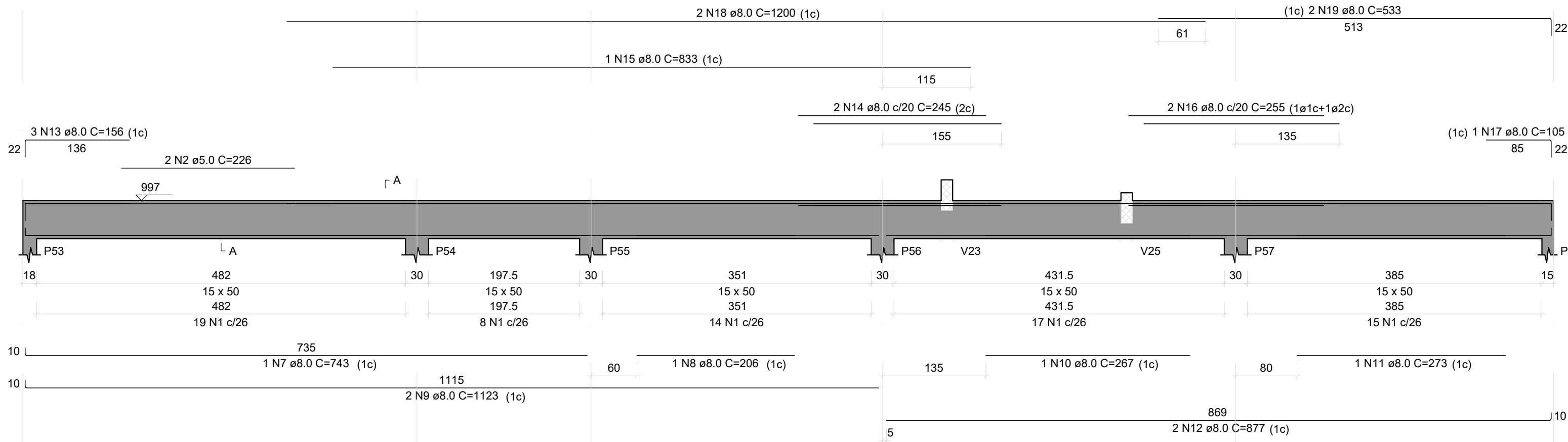


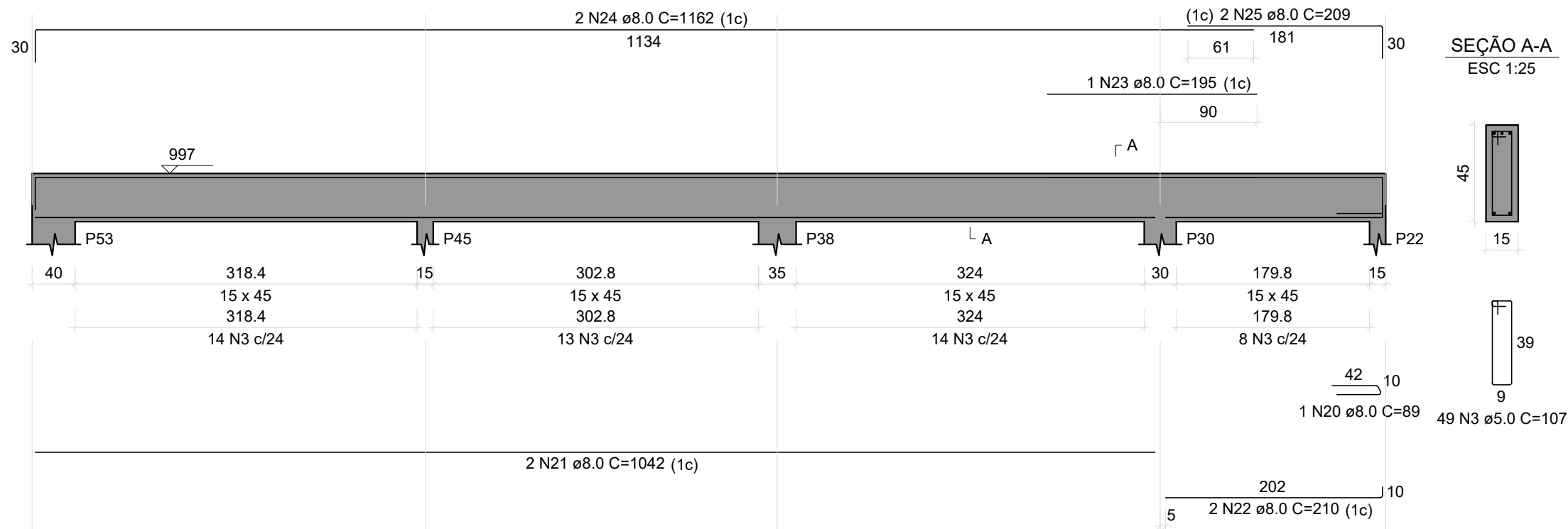
V14

ESC 1:50



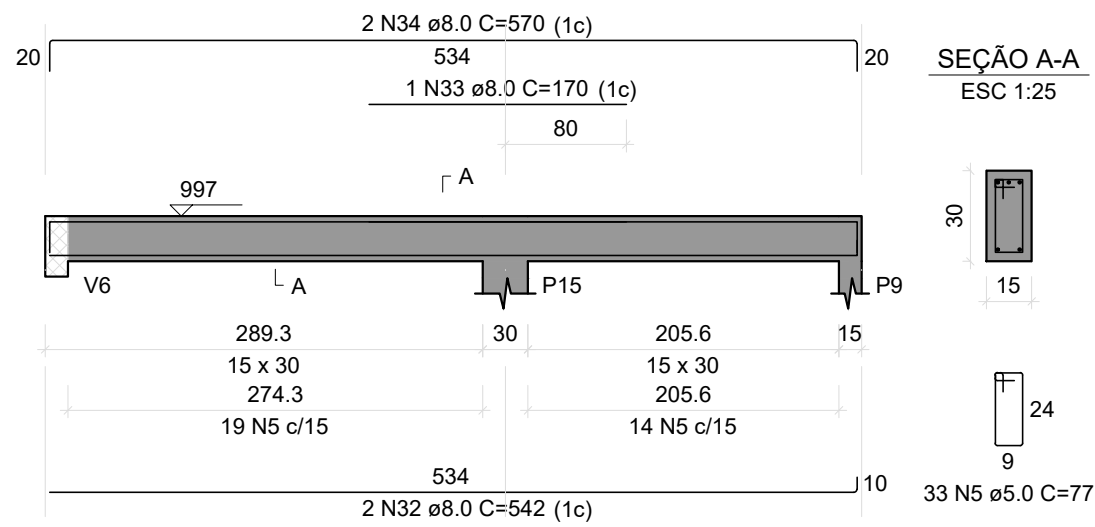
V15

ESC 1:50



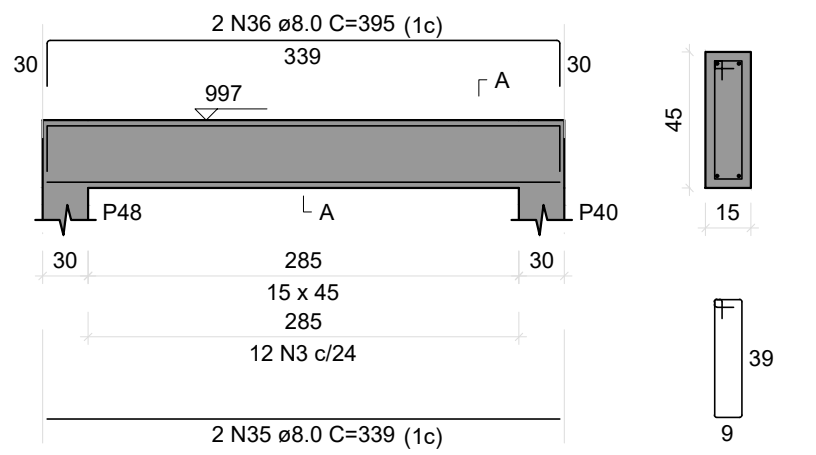
V17

ESC 1:50



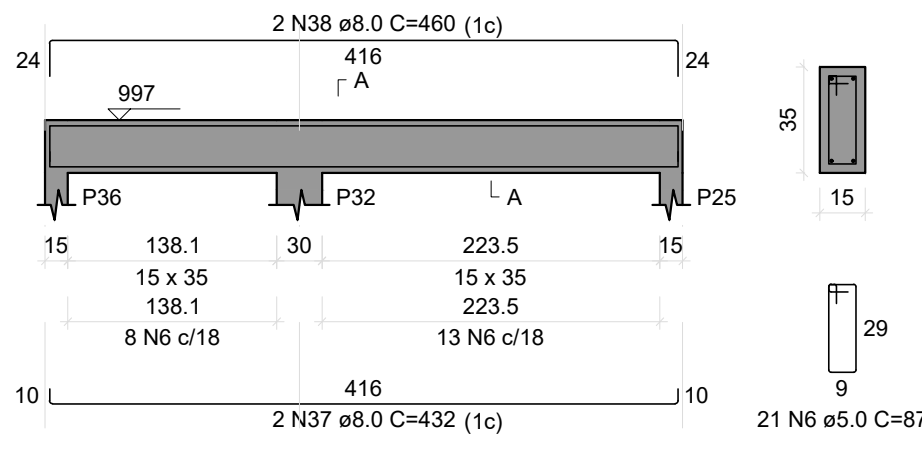
V18

ESC 1:50



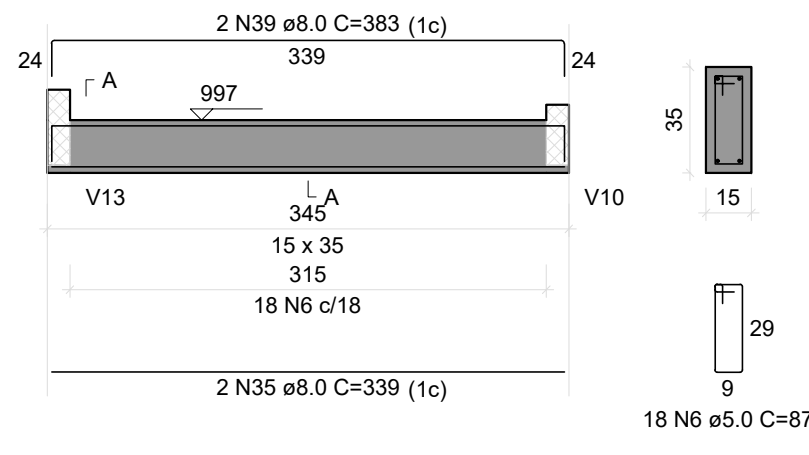
V19

ESC 1:50



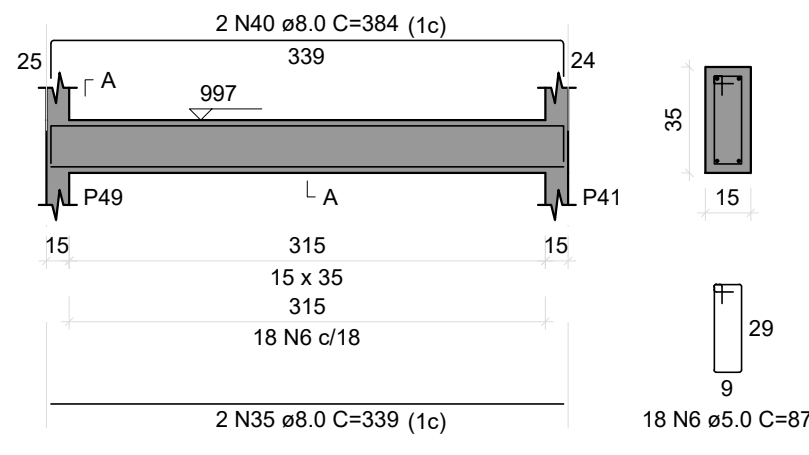
V20

ESC 1:50



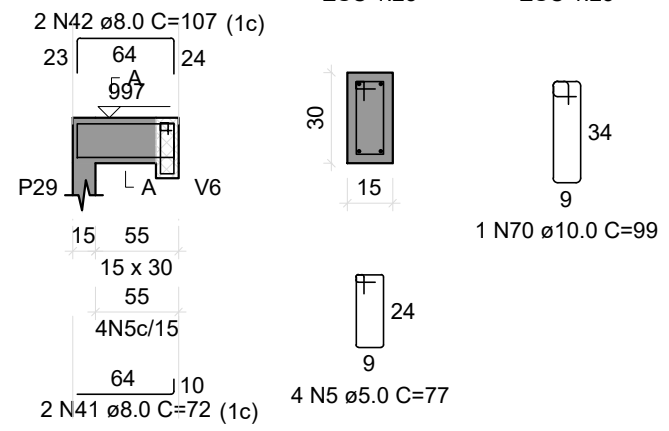
V21

ESC 1:50



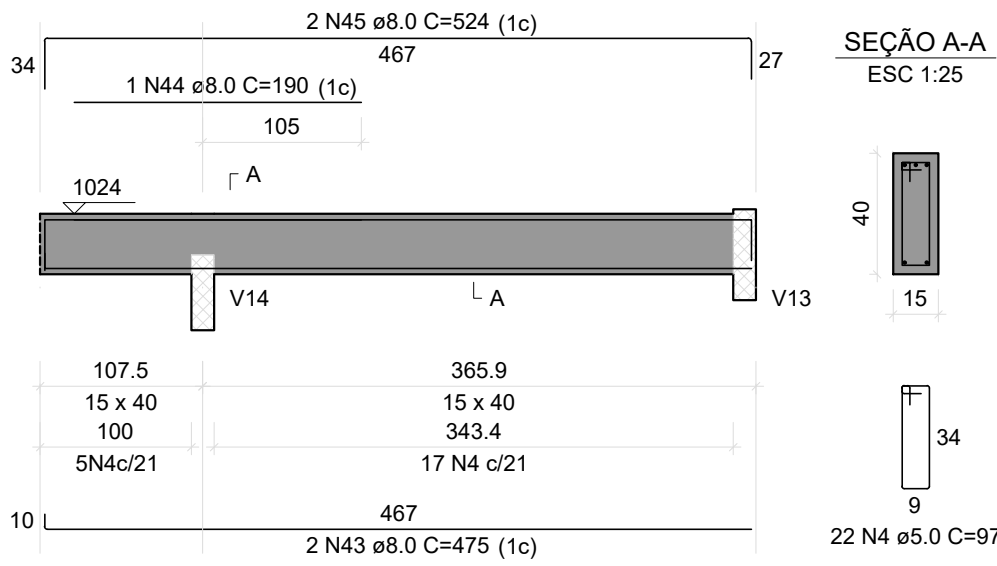
V22

ESC 1:50



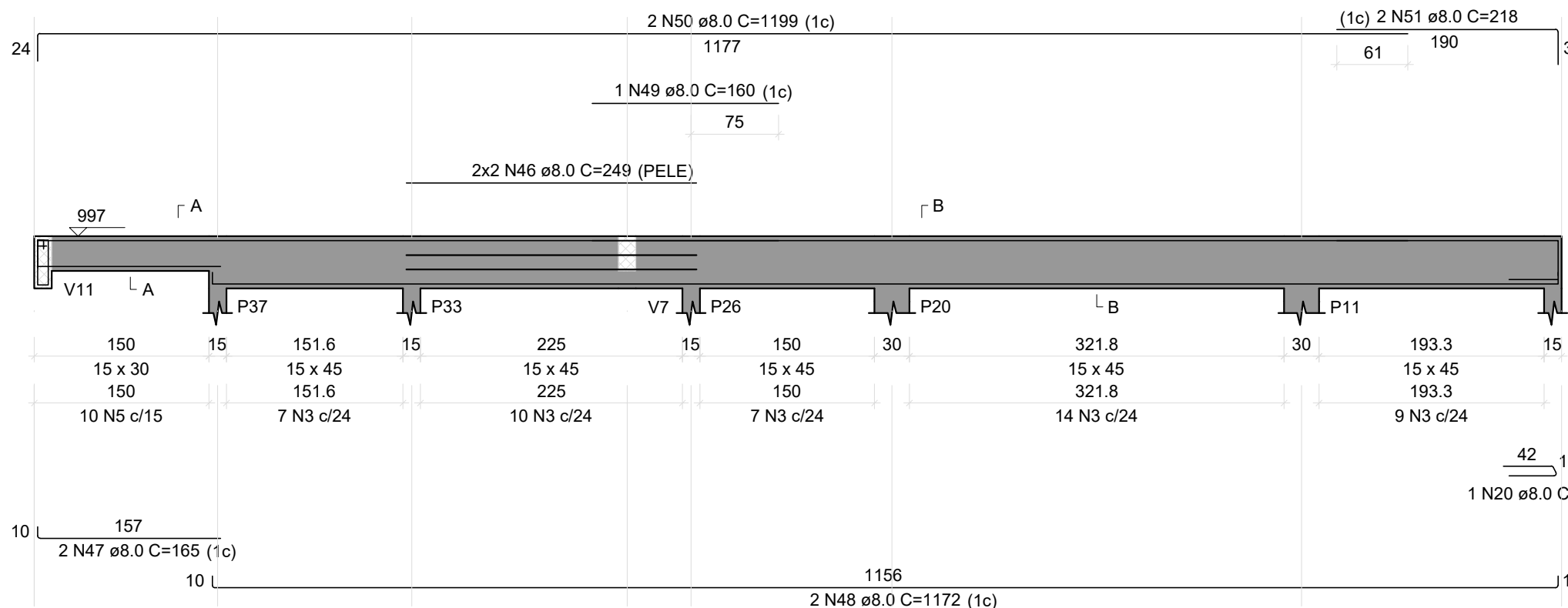
V23

ESC 1:50



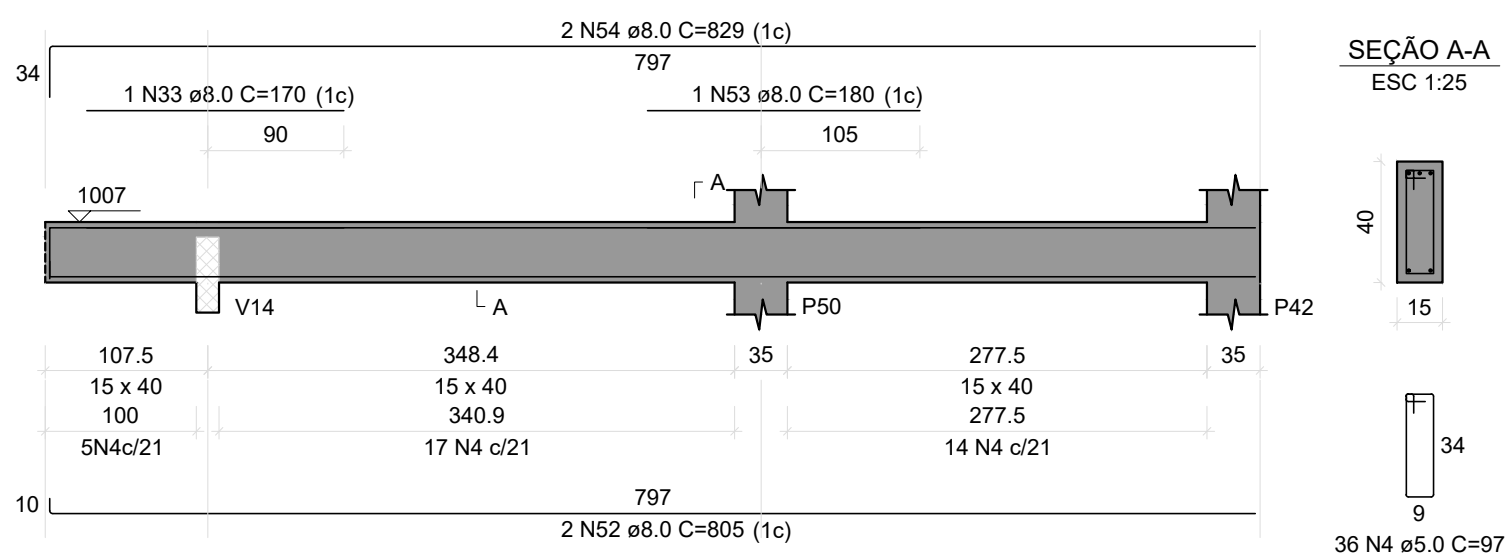
V24

ESC 1:50



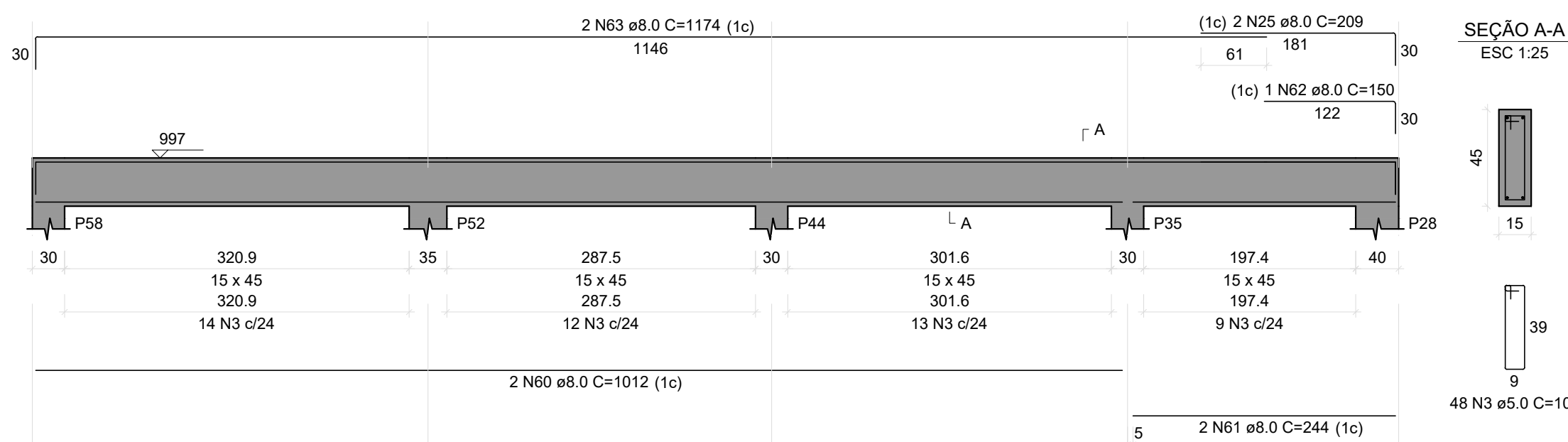
V25

ESC 1:50



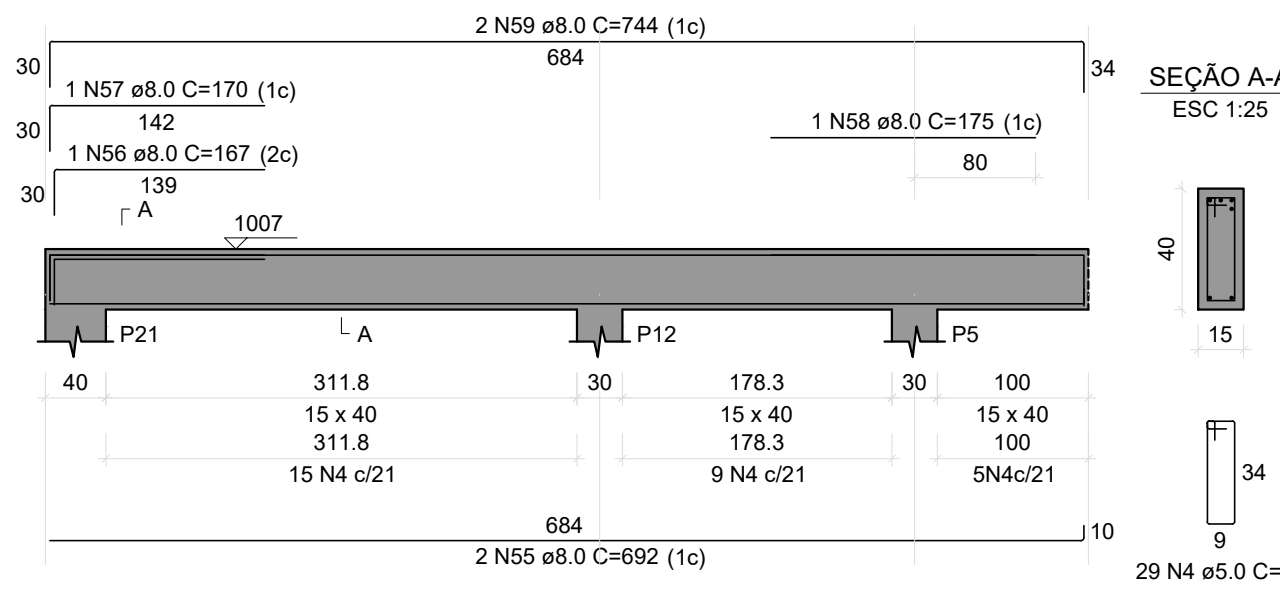
V27

ESC 1:50



V26

ESC 1:50



RELAÇÃO DO AÇO

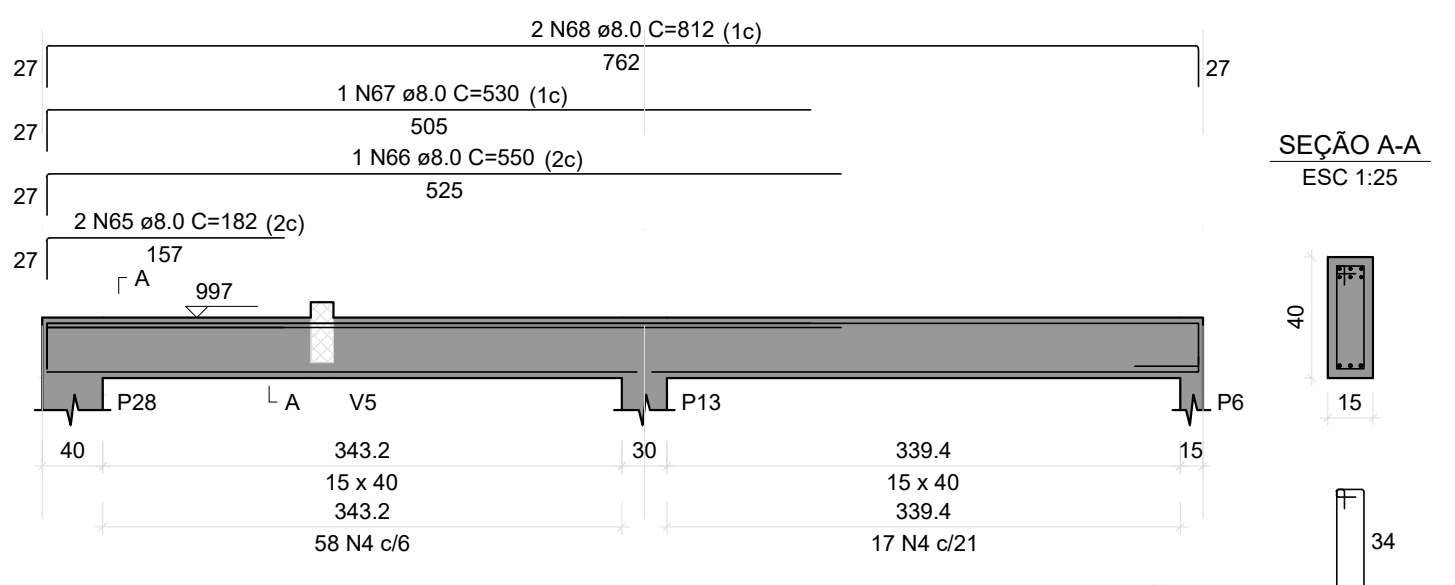
AÇO	N	DIAM (mm)	QUANT	C.UNIT (cm)	C.TOTAL (cm)
V14	1	5.0	73	117	8541
V15	2	5.0	2	226	452
V16	3	5.0	156	107	16682
V17	4	5.0	222	97	21534
V18	5	5.0	47	77	3619
V19	6	5.0	57	87	4959
V20	7	8.0	1	743	743
V21	8	8.0	1	206	206
V22	9	8.0	2	1123	2246
V23	10	8.0	1	267	267
V24	11	8.0	1	273	273
V25	12	8.0	2	877	1754
V26	13	8.0	3	156	468
	14	8.0	2	245	490
	15	8.0	1	833	833
	16	8.0	2	255	510
	17	8.0	1	190	190
	18	8.0	2	1200	2400
	19	8.0	2	533	1066
	20	8.0	2	89	267
	21	8.0	2	1042	2084
	22	8.0	2	210	420
	23	8.0	2	195	390
	24	8.0	2	1162	2324
	25	8.0	4	209	836
	26	8.0	2	1101	2202
	27	8.0	2	254	508
	28	8.0	1	600	600
	29	8.0	1	205	205
	30	8.0	2	1199	2398
	31	8.0	2	273	546
	32	8.0	2	542	1084
	33	8.0	2	170	340
	34	8.0	2	570	1140
	35	8.0	6	339	2034
	36	8.0	2	395	790
	37	8.0	2	432	864
	38	8.0	2	460	920
	39	8.0	2	383	766
	40	8.0	2	384	768
	41	8.0	2	144	288
	42	8.0	2	107	214
	43	8.0	2	475	950
	44	8.0	1	190	190
	45	8.0	2	524	1048
	46	8.0	4	249	996
	47	8.0	2	165	330
	48	8.0	2	1172	2344
	49	8.0	1	160	160
	50	8.0	2	1199	2398
	51	8.0	2	629	1258
	52	8.0	2	805	1610
	53	8.0	1	180	180
	54	8.0	2	629	1258
	55	8.0	2	652	1304
	56	8.0	1	167	167
	57	8.0	1	170	170
	58	8.0	1	175	175
	59	8.0	2	744	1488
	60	8.0	2	1012	2024
	61	8.0	2	244	488
	62	8.0	1	150	150
	63	8.0	2	1174	2348
	64	8.0	2	369	738
	65	8.0	2	182	364
	66	8.0	1	550	550
	67	8.0	1	530	530
	68	8.0	2	812	1624
	69	10.0	1	216	216
	70	10.0	1	99	99
	71	10.0	1	109	109
	72	10.0	3	390	1170

RESUMO DO AÇO

AÇO	DIAM (mm)	C.TOTAL (m)	PESO + 10% (kg)
CA50	8.0	577.1	250.5
CA60	10.0	15.9	10.8
CA60	5.0	558	94.6
PESO TOTAL (kg)			
CA50	261.3		
CA60	94.6		
Volume de concreto (C-25) = 6.95 m³			
Área de forma = 69.82 m²			

V28

ESC 1:50



BLOCO DA DELEGACIA PRANCHAS DE: 296 a 348

REVISÃO	DESCRIÇÃO	REVISADO POR	DATA
1	EMISSÃO INICIAL	WAGNER	MARÇO/2024
2	361	J10	
3	2 N64 ø8.0 C=369 (1c)		

SECRETARIA DE ESTADO DA SEGURANÇA PÚBLICA				DIRETORIA DE ARQUITETURA E EDIFICAÇÕES PRAÇA TOBIAS BARRETO, nº 20, BAIRRO SÃO JOSÉ CEP: 49050-220 ARACAJU/SE TELS: (79)3216-5454 / (79)98851-9337	
TIPO/PROJETO ESTRUTURAL EXECUTIVO DA CONSTRUÇÃO DO CENTRO INTEGRADO DE SEGURANÇA PÚBLICA (CISP) EM NOSSA SENHORA DA GLÓRIA/SE				Nº DA PRANCHA	
ASSUNTO: BLOCO DA DELEGACIA VIGAS DO 2º PAVIMENTO 02				338/348	
END.: RUA ANTÔNIO JOAQUIM DE FARIAS, S/N – N. SRA DA GLÓRIA – SE					
AUTOR DO PROJETO: WAGNER DARY DA SILVA					
RESPONSÁVEL TÉCNICO: WAGNER DARY DA SULVA RN: 270771497-6					
ESCALA: INDICADO	DATA: MARÇO/2024	DESENHISTA: WAGNER DARY DA SILVA			